

FIX MSSQL Interface – Installation Guide

Overview

This installation assumes that FIX is already installed on your computer on a folder called, 'C:\FIX'. Throughout you may replace this with the real folder name where you have FIX installed. You may use any workstation to accomplish this but you must have full permissions on this folder. In addition you must have administration access to the MSSQL server authenticated by Windows.

The files are provided by using the internet location with password 'dandy'.

www.fixpro.com/_download/p4758.exe

(you may click the live link above to download)

During the download you are prompted for the target location. The default is location C:\FIX. You may substitute this with any folder where you have FIX installed.

Once the file is downloaded it will automatically run or you may save it and run it later.

It will extract files into the C:\FIX folder

Files:

C:\FIX\xdt

C:\FIX\xdt2

C:\FIX\xdt3

C:\FIX\p4758.lst

C:\FIX\Programs\fx624

C:\FIX\Programs\fx624.cmd

C:\FIX\Programs\fx627

C:\FIX\Programs\fx627\$01

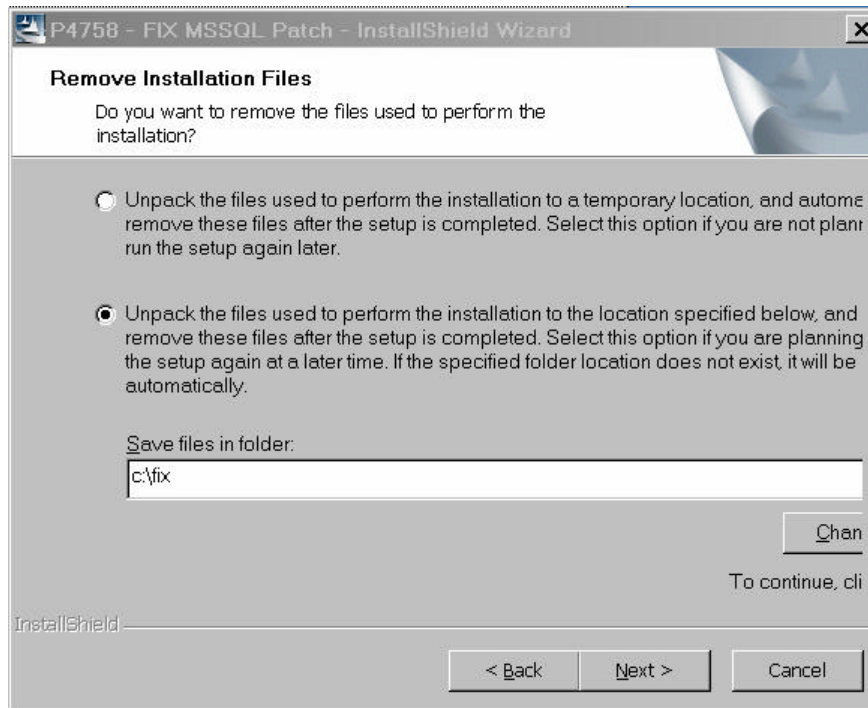
C:\FIX\Programs\fx627\$02

C:\FIX\Mssql\readme.txt

C:\FIX\Mssql\fix.mdf

C:\FIX\Mssql\fix.ldf

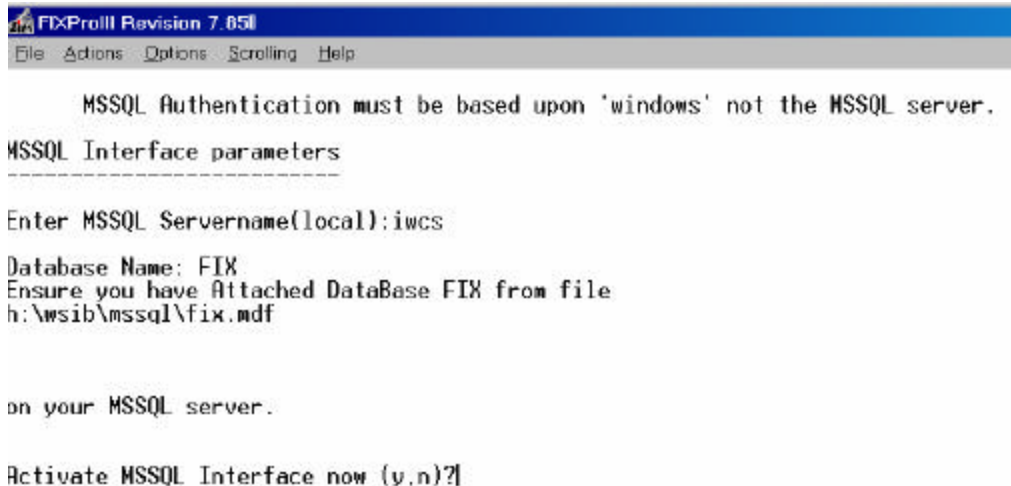
2. Enter the password
dandy
then click 'next'
3. Change the next screen to 'unpack the files into a location and save them' and make the folder 'C:\FIX' into the correct folder where your FIX database is located.
NOTE: Caution here to those users that have FIX application software and FIX data separated by areas.zim. The database location referenced herein is the location where the FIX application software folder is located. This is typically where the original FIX software was installed, not the 'external' database. If you have an areas.zim file in the folder where your application software is located, this is where your database folder is located NOT the shared drive where just the ZIM01* and ZIM02* files are located.



4. You may be prompted to 'overwrite' some files, such as 'Xdt'. Answer this prompt with 'Yes to All'.
5. At this point the FIX installation process begins. The computer behind the scenes is executing a command line prompt as:
C:\FIX> Zim.exe XDT
6. You will be prompted to continue the installation. Answer 'Y'. If this fails to appear, you may have a permissions problem. Ensure the FIX system was working previously in the folder you have selected. If you have to make a change to the FIX folder simply rerun the process from the

beginning by executing P4758.exe.

7. There should be no errors reported at this point and the MSSQL activation steps below should appear. If any errors during the installation procedure (creating new objects in FIX for the interface or compilation errors), then they will appear at this step. Answer 'Y' to the print prompt and send the printout by fax to 905-855-8989 or email the file c:\fix\errors.trc to support@fixpro.com. Please ensure you have a contact name and number where you can be reached enclosed with the fax or email. 90% of all FIX related support problems are security related. If you want to check first if you have 'full' access rights to the C:\FIX folder this may save time. Simply re-run this procedure from the P4758.exe execution step after correcting the permissions problems.
8. This step will prompt for the MSSQL server and prompt for confirmation to activate this interface. Enter the server name (as an example iwcs) and then answer 'Y' to activate the interface. If you enter 'N' to activate the interface all the software and interfaces will remain in place, but the actual data storage will not occur in MSSQL it will remain only in FIX's native storage ZIM sql database files.



```
FIXProIII Revision 7.05L
File Actions Options Scrolling Help

MSSQL Authentication must be based upon 'windows' not the MSSQL server.
MSSQL Interface parameters
-----
Enter MSSQL Servername(local):iwcs
Database Name: FIX
Ensure you have Attached DataBase FIX from file
h:\wsib\mssql\fix.mdf

on your MSSQL server.

Activate MSSQL Interface now (y,n)?
```

9. Answering the above activation 'Y' updates file c:\fix.ini. The values updated are:
mssqlservername=
mssqldbname=FIX
mssql=Yes
Alternatives to this may be to answer this prompt 'N' and later use a text editor on FIX.ini to reset these values.

MSSQL Database

The files installed by executing P4758.exe into c:\FIX\MSSQL for the tables are called:

C:\FIX\MSSQL\FIX.MDF

C:\FIX\MSSQL\FIX.LDF

These files may be copied to another location and then attached to the Microsoft SQL server as below.

